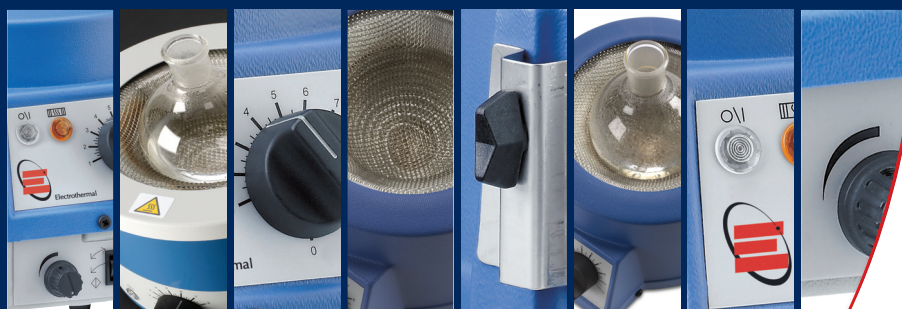




## Focus on Heating Mantles

Electrothermal has over 70 year's heritage in the design and manufacture of Heating Mantles and is known throughout the world for producing high quality, robust and safe equipment. The range of Electromantles is diverse, offering a heating solution for most applications, including Electromantles for heating and stirring, multi-position, V-shaped and spill-proof.



## Metal Electromantles

- Powder coated aluminium outer casing for good chemical resistance and excellent durability.
- Unique airflow within the mantle to prevent the outer casing from getting hot
- Maximum element temperature of 450°C
- Easy to replace heater cartridge
- Grounded stainless steel earth screen for added safety\*
- Thermally insulated heater cartridge for maximum heat transfer to the flask
- Non-skid feet for stability
- Can be used with external controllers

\* Not applicable on CMUV models



## Heating Mantles

### CMU Controlled Mantles

- Heating only mantles with inbuilt temperature control

Part Number	Capacity	Dimensions, mm	Weight
CMU0050/CE	50ml	175 x 175 x 150	0.75 kg
CMU0100/CE	100ml	175 x 175 x 150	0.75 kg
CMU0250/CE	250ml	175 x 175 x 150	0.75 kg
CMU0500/CE	500ml	220 x 220 x 170	1.5 kg
CMU1000/CE	1000ml	220 x 220 x 170	1.5 kg

## Heating Mantles

### CMU Uncontrolled Mantles

- Heating only mantles without control
- Designed for use with external controllers in a fume hood

Part Number	Capacity	Dimensions, mm	Weight
CMU0050/E	50ml	175 x 175 x 150	0.75 kg
CMU0100/E	100ml	175 x 175 x 150	0.75 kg
CMU0250/E	250ml	175 x 175 x 150	0.75 kg
CMU0500/E	500ml	220 x 220 x 170	1.5 kg
CMU1000/E	1000ml	220 x 220 x 170	1.5 kg
CMU2000/E	2000ml	320 x 320 x 220	2.75 kg
CMU3000/E	3000ml	320 x 320 x 220	2.75 kg
CMU5000/E	5000ml	320 x 320 x 220	2.75 kg

Quality. Reliability. Safety. Electrothermal.



## Multi-volume Heating Mantle

### CMUT Controlled Mantles

- Heating only multi volume mantle
- Accepts flasks sizes 250ml, 500ml and 1000ml

Part Number	Capacity	Dimensions, mm
CMUT1000/CE	250 - 1000ml	220 x 220 x 170



## Heating and Stirring Mantles

### CMUA Controlled Mantles

- Heating and stirring mantles
- Powerful 2000rpm stirring capability
- Stir bar 'auto recapture' function
- Appropriate stir bar provided



## Large volume Heating Mantles

### CMUV Controlled Mantles

- Large volume heating only mantles
- Three heater circuits to heat the bottom, middle or top of the flask
- Available in 4 sizes to accommodate flasks from 10L to 22L

Part Number	Capacity	Dimensions, mm	Weight
CMUA0100/CE	100ml	175 x 175 x 150	0.75 kg
CMUA0250/CE	250ml	175 x 175 x 150	0.75 kg
CMUA0500/CE	500ml	220 x 220 x 170	1.5 kg
CMUA1000/CE	1000ml	220 x 220 x 170	1.5 kg
CMUA2000/CE	2000ml	320 x 320 x 220	2.75 kg
CMUA3000/CE	3000ml	320 x 320 x 220	2.75 kg
CMUA5000/CE	5000ml	320 x 320 x 220	2.75 kg

Part Number	Capacity	Dimensions, mm	Weight
CMUV10/CL	10L	485 x 485 x 300	6 kg
CMUV12/CL	12L	485 x 485 x 300	6 kg
CMUV20/CL	20L	485 x 485 x 300	8.5 kg
CMUV22/CL	22L	485 x 485 x 300	8.5 kg

## Plastic Electromantles

- Polypropylene outer casing which has excellent chemical resistance is lightweight and easy to clean.
- Unique airflow within the mantle to prevent the outer casing from getting hot
- Maximum element temperature of 450°C
- Easy to replace heater cartridge
- Grounded stainless steel earth screen for added safety
- Thermally insulated heater cartridge for maximum heat transfer to the flask
- Non-skid feet for stability
- Can be used with external controllers



## Heating Mantles

### EM Mantles

- Heating only mantles with a built in control
- Accommodate a range of flask sizes from 50ml to 5000ml

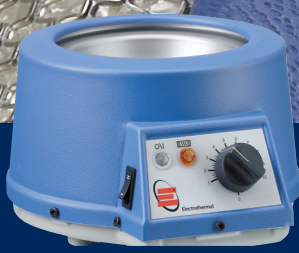
Part Number	Capacity	Dimensions, mm	Weight
EM0050/CE	50ml	260 x 175 x 127	0.78 kg
EM0100/CE	100ml	260 x 175 x 127	0.78 kg
EM0250/CE	250ml	260 x 175 x 127	0.78 kg
EM0500/CE	500ml	310 x 238 x 145	1.25 kg
EM1000/CE	1000ml	310 x 238 x 145	1.25 kg
EM2000/CE	2000ml	400 x 350 x 190	2.58 kg
EM3000/CE	3000ml	400 x 350 x 190	2.58 kg
EM5000/CE	5000ml	400 x 350 x 190	2.58 kg

## Heating and Stirring Mantles

### EMA Mantles

- Heating Stirring mantles
- Bi-directional Stirring up to 520rpm
- Stir bar 'auto-recapture' function
- Appropriate stir bar provided

Part Number	Capacity	Dimensions, mm	Weight
EMA0050/CEB	50ml	260 x 175 x 133	1.73 kg
EMA0100/CEB	100ml	260 x 175 x 133	1.73 kg
EMA0250/CEB	250ml	260 x 175 x 133	1.73 kg
EMA0500/CEB	500ml	310 x 238 x 157	2.75 kg
EMA1000/CEB	1000ml	310 x 238 x 157	2.75 kg
EMA2000/CEB	2000ml	400 x 350 x 197	5.68 kg
EM3000/CE	3000ml	400 x 350 x 197	5.68 kg
EM5000/CE	5000ml	400 x 350 x 197	5.68 kg



## Heating and Stirring Mantles EMV Mantles

- V-Shaped heating only mantles
- Designed to accept pear shaped flasks and funnels along with round bottomed flasks

<u>Part Number</u>	<u>Capacity</u>	<u>Dimensions, mm</u>	<u>Weight</u>
EMV0050/CE	50ml	260 x 175 x 127	0.78 kg
EMV0250/CE	250ml	260 x 175 x 127	0.78 kg
EMV1000/CE	1000ml	310 x 238 x 145	2.76 kg
EMV5000/CE	5000ml	400 x 350 x 190	5.96 kg

## Spill proof V-shaped Heating Mantles EMX Mantles

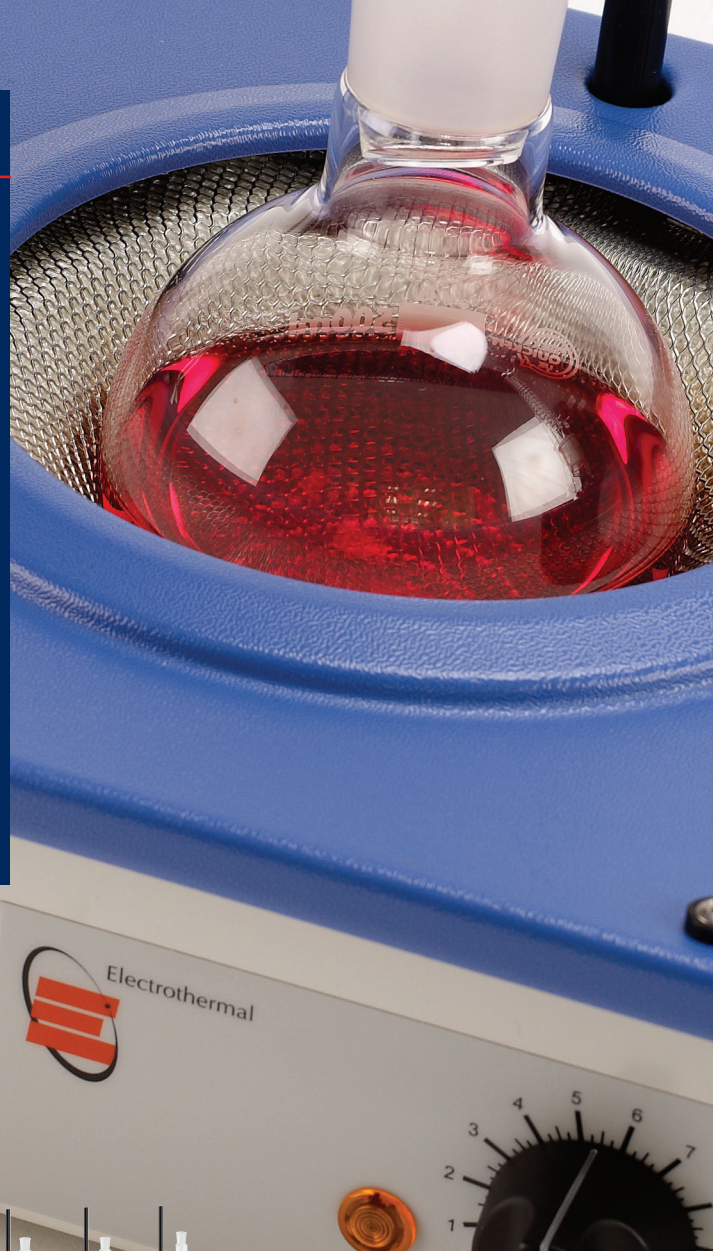
- Spill-proof version of the EMV
- Incorporates a solid stainless steel earth screen to protect the element from harsh chemicals or water ingress

<u>Part Number</u>	<u>Capacity</u>	<u>Dimensions, mm</u>	<u>Weight</u>
EMX1000/SCE	1000ml	310 x 238 x 145	2.76 kg
EMX5000/SCE	5000ml	400 x 350 x 190	5.96 kg

Quality. **Reliability.** Safety. Electrothermal.

## Multi-position mantles

- Available in three or six positions, heating only or heating and stirring models
- Maximum element temperature of 450°C
- Polypropylene top case and power coated aluminium base provide excellent chemical resistance
- Grounded stainless steel earth screen over every heating position provides added safety
- Thermally insulated heater cartridge for maximum heat transfer to the flask
- Unique airflow within the mantle prevents the outer casing from getting hot



### Three-position Heating Mantles EME Controlled Mantles

- Multi-position heating only mantles
- Individual temperature control for each position

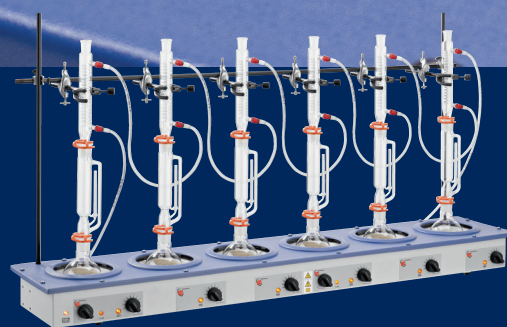
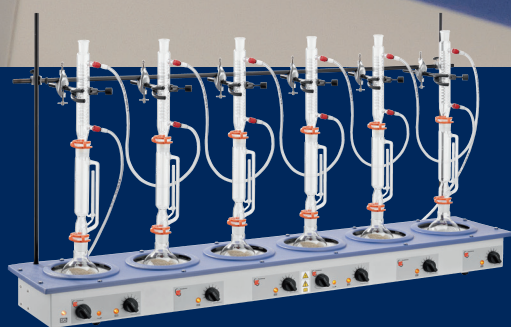
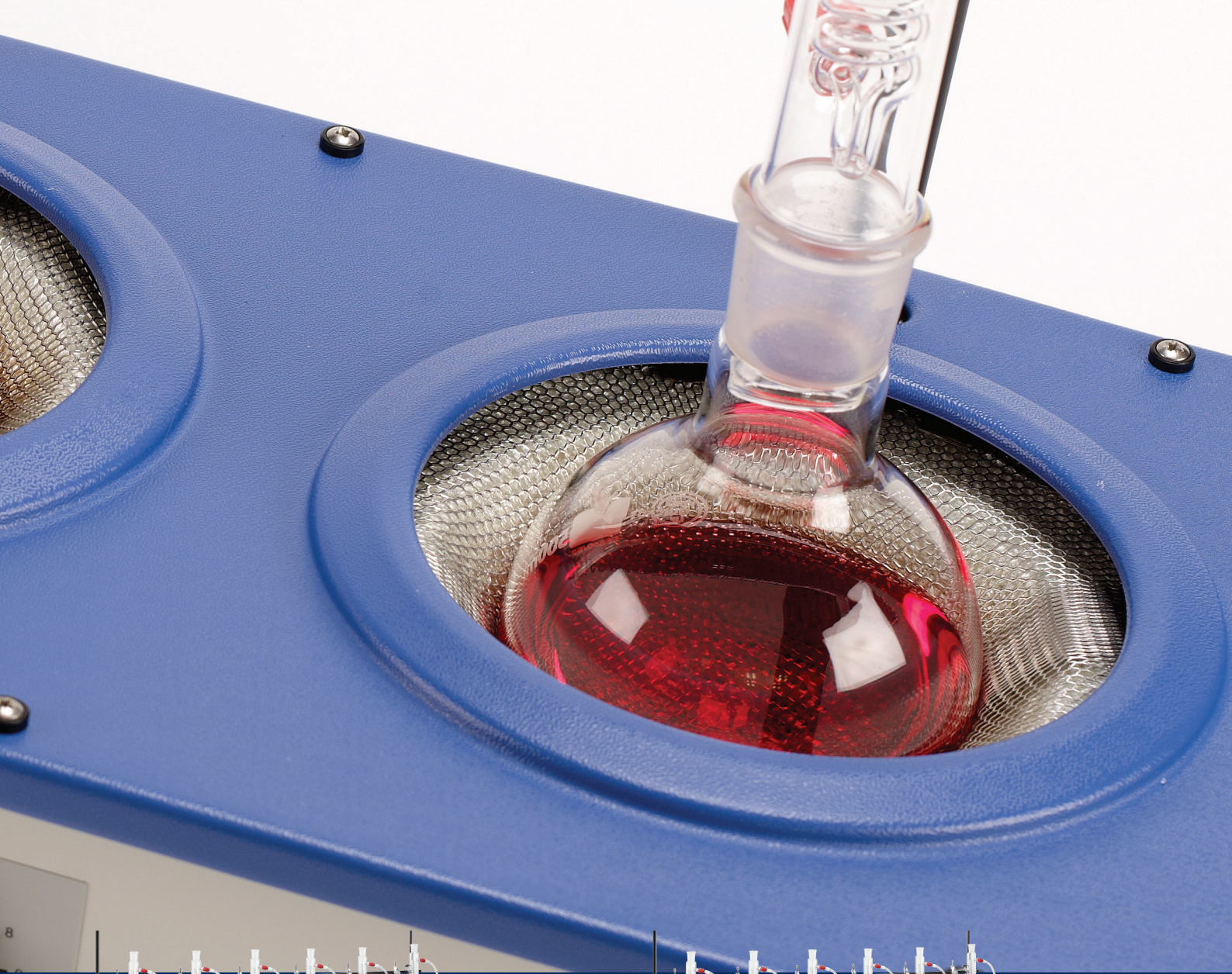
Part Number	Capacity	Dimensions, mm	Weight
EME30100/CEB	100ml	270 x 640 x 110	6.2 kg
EME30250/CEB	250ml	270 x 640 x 110	6.2 kg
EME30500/CEB	500ml	285 x 755 x 130	7.4 kg
EME31000/CEB	1000ml	285 x 755 x 130	7.4 kg



### Three-position Heating and Stirring EMEA Controlled Mantles

- Allow the solution to be stirred and heated simultaneously
- Provides stirring speeds of between 50 and 1000rpm
- One stirring control operates each set of three recesses

Part Number	Capacity	Dimensions, mm	Weight
EMEA30100/CE	100ml	270 x 640 x 110	7 kg
EMEA30250/CE	250ml	270 x 640 x 110	7 kg
EMEA30500/CE	500ml	285 x 755 x 130	8.4 kg
EMEA31000/CE	1000ml	285 x 755 x 130	8.4 kg



### Six-position Heating Mantles EME Controlled Mantles

- Multi-position heating only mantles
- Individual temperature control for each position

Part Number	Capacity	Dimensions, mm	Weight
EME60100/CEB	100ml	270 x 1210 x 110	10.1 kg
EME60250/CEB	250ml	270 x 1210 x 110	10.1 kg
EME60500/CEB	500ml	285 x 1450 x 130	12.5 kg
EME61000/CEB	1000ml	285 x 1450 x 130	12.5 kg

### Six-position Heating and Stirring EMEA Controlled Mantles

- Allow the solution to be stirred and heated simultaneously
- Provides stirring speeds of between 50 and 1000rpm
- One stirring control operates each set of six recesses

Part Number	Capacity	Dimensions, mm	Weight
EMEA60100/CE	100ml	270 x 1210 x 110	10.1 kg
EMEA60250/CE	250ml	270 x 1210 x 110	10.1 kg
EMEA60500/CE	500ml	285 x 1450 x 130	12.5 kg
EMEA61000/CE	1000ml	285 x 1450 x 130	12.5 kg

Quality. Reliability. **Safety.** Electrothermal.



## Electric Bunsen Mantle

### BA6101/C

- Electrically powered Bunsen burner
- Maximum element temperature of 800°C
- Conical shaped heater element directs heat to a focal point
- Air circulation from the vented housing keeps the base cool enough to touch
- None skid feet for added stability
- Kit includes MC5 controller

Part Number	Dimensions, mm	Weight
BA6101/C	120 x 177	0.5 kg



#### Bibby Scientific - UK

Beacon Road, Stone,  
Staffordshire, ST15 0SA,  
United Kingdom  
T: +44 (0)1785 812121  
F: +44 (0)1785 813748  
E: sales@bibby-scientific.com

#### Bibby Scientific - France

Bâtiment le Deltaparc Silic Paris  
Nord 2, 7 rue du Canal,  
BP 55437 Villepinte 95944 ROISSY  
Charles de Gaulle, France  
T: +33 (0) 1 48 63 78 00  
F: +33 (0) 1 48 63 78 01  
E: ventes@bibby-scientific.fr

#### Bibby Scientific - US

3 Terri Lane, Suite 10,  
Burlington,  
NJ 08016, USA  
T: +1 609 589 2560  
F: +1 609 589 2571  
E: labproducts@technusa.com

#### Bibby Scientific - Singapore

Prudential Tower, Level 26  
30 Cecil Street,  
Singapore, 049712  
T: + 65 6631 2976  
F: +44 (0) 1785 810405  
E: info@bibby-scientific.com

#### Bibby Scientific - Middle East

PO Box 27842 Engomi 2433  
Nicosia, Cyprus  
T: + 357 22 660 423  
F: + 357 22 660 424  
E: sales@bibby-scientific.me